

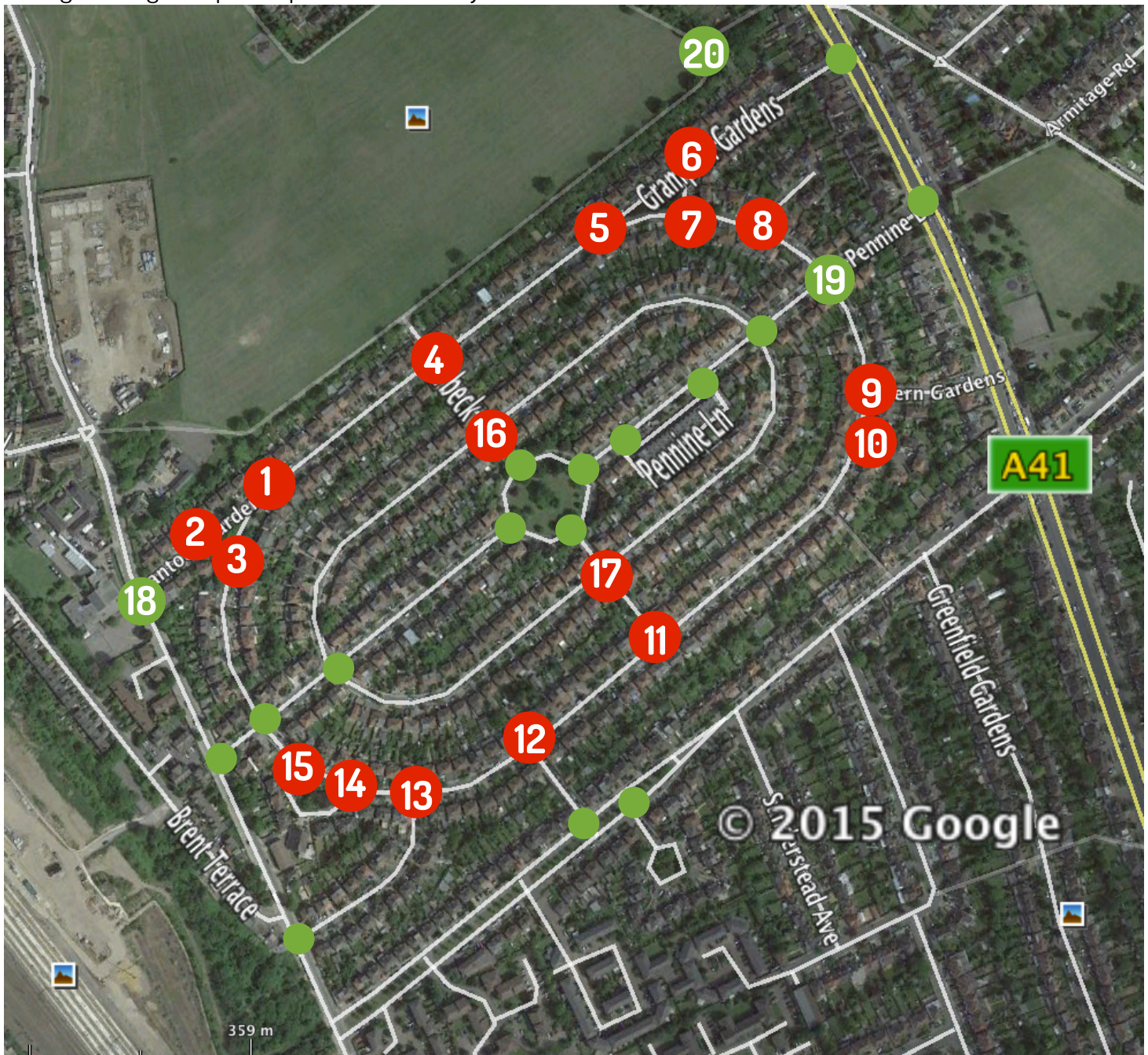


On June 26 2015, the Residents Association reported to Barnet's Customer Service that the road markings in the Golders Green Estate were fading and it was potentially very dangerous as drivers do not know who has the right of way (Ref: 48585). If there is an accident, who has the responsibility?

Road markings at junctions with major boundary roads, like A41, The Vale and Claremont Road, are in good state. Junctions with Pennine Drive, resurfaced last year, are also in good state, shown in map as green dots. For the rest of the junctions, shown in map with red dots, road markings need re-painting. **THIS IS URGENT**

Additionally, there are four particular junctions that do concern to our residents: the junction at Cotswold Gardens and Purbeck Drive (4), the junction next to Pennine GP Surgery (19), the junction opposite Claremont School (18) and Clitterhouse Playing Fields entrance from Hendon Way (20).

(Images: Google maps and photos taken last year)



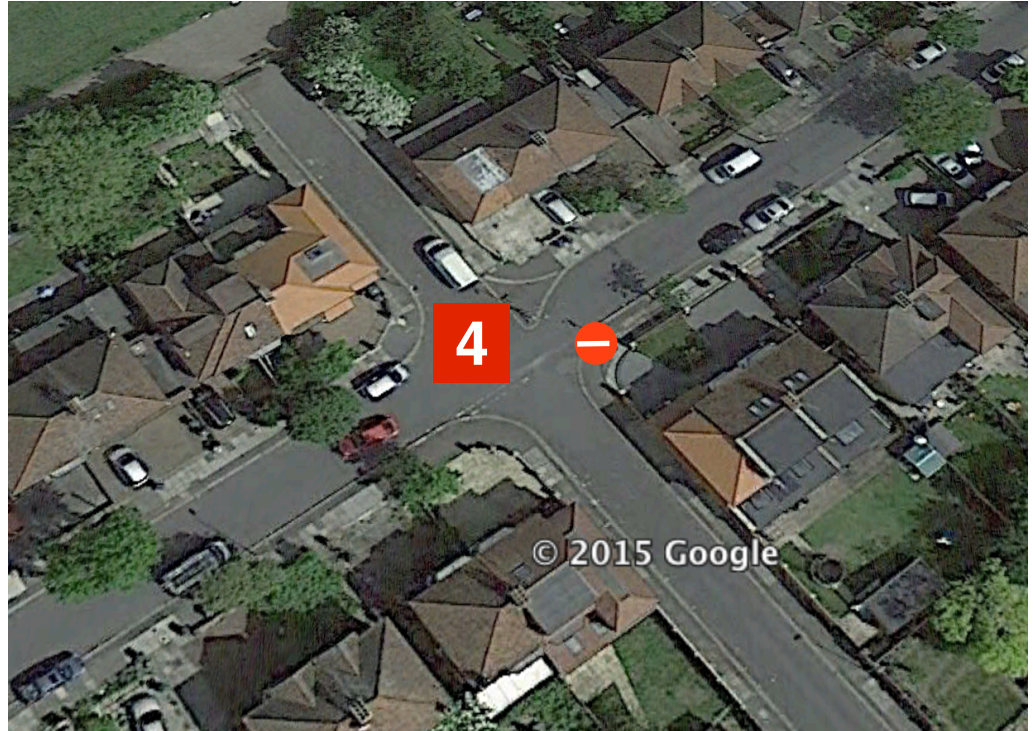


Junction 1 was first reported 21.07.15 reference 48584



Cotswold Gardens and Purbeck Drive

This is the most dangerous junction in the Golders Green Estate. GGERA and the Police have asked the Council for it to be redesigned various times. Cotswold Gardens is used as rat-run, the no-entry sign is constantly ignored, cars exceed speed limit and we have had two of our children hit-and-run in the past, a car crashing into a corner property and many near-misses while cars are coming out of own drives.



Residents have been highlighting this since 2011. Last reference being 48586 dated 26.06.15

GGERA has also been requesting a CCTV camera to control illegal driving, tackle fly-tipping, antisocial and criminal behaviour at the entrance to Clitterhouse Playing Fields. Also discussed with Barnet Community Safety team during their visit 28 May 2015.



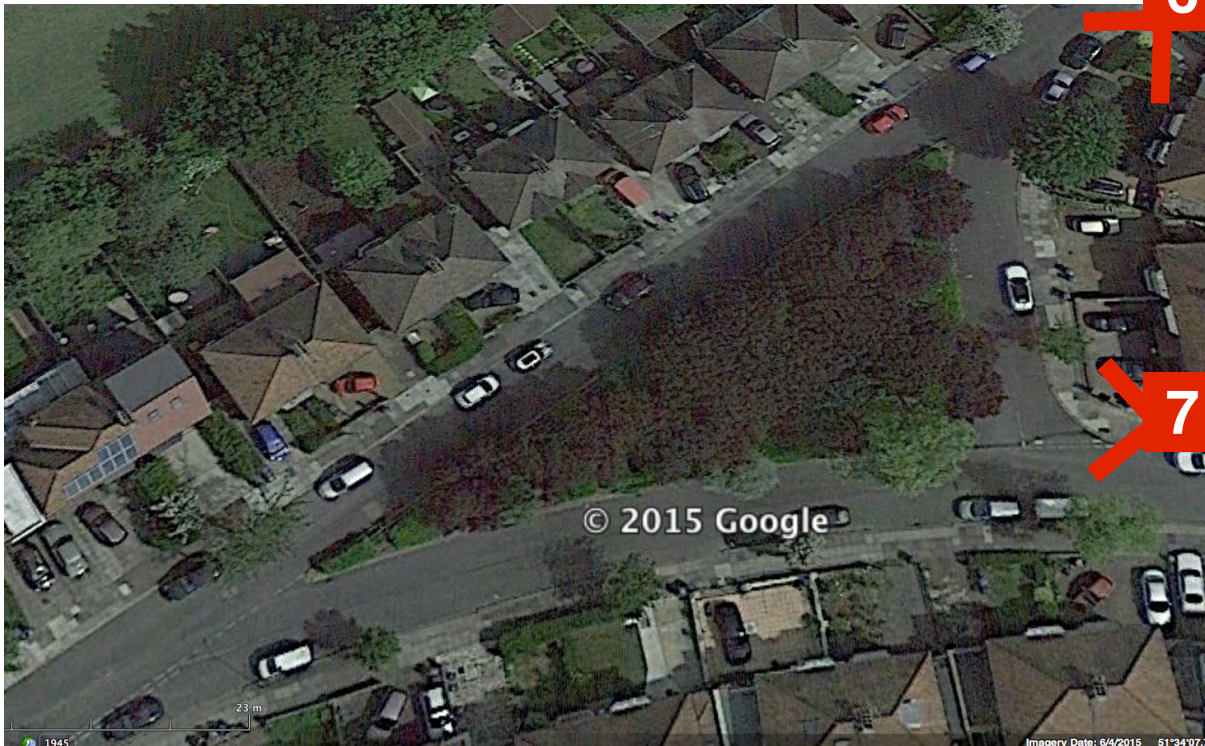
2013



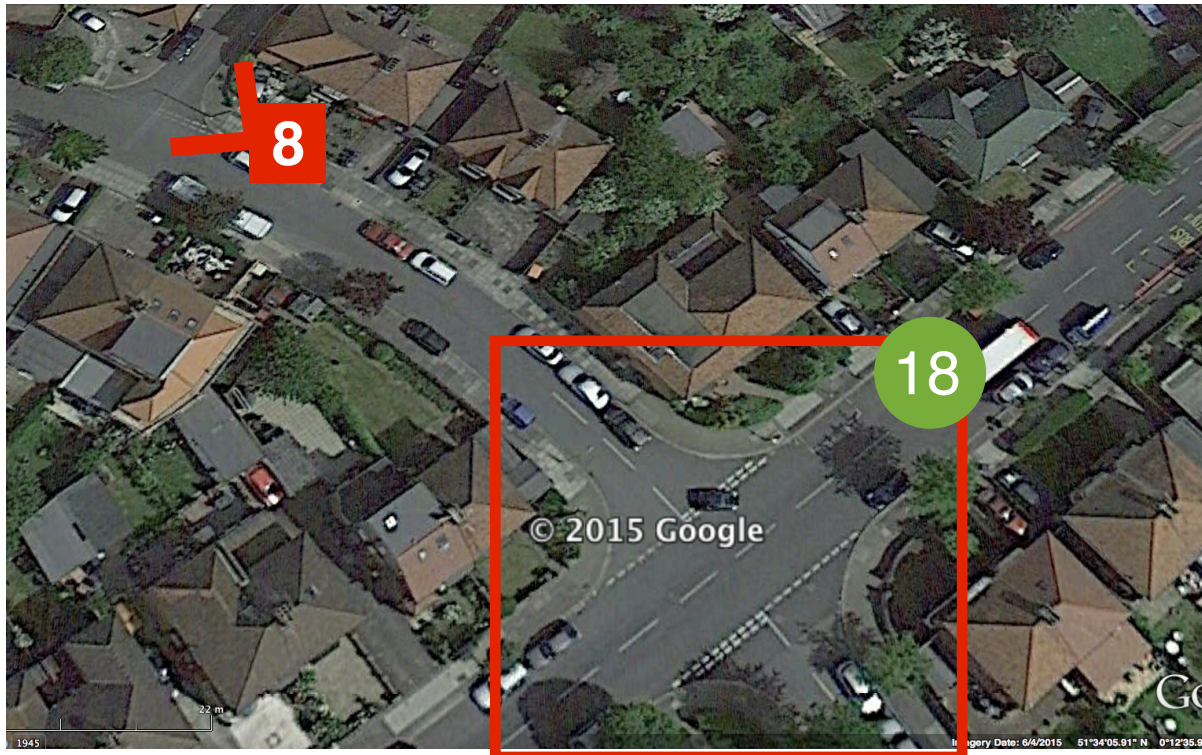
2015

Fly-tipping is an ongoing problem at the entrance of Clitterhouse Playing Fields used by many residents, particularly children on their way to our local schools and when coming to weekend football training.

This junction needs CCTV & redesigning in coordination with stakeholders.



Cotswold Gate and GP Surgery junction (Cotswold Gardens and Pennine Drive)



GGERA has requested double yellow lines for the corners of Cotswold Gardens and Pennine Drive (Reference 48585, 26.05.15) because drivers are parking illegally at corners reducing visibility and making this corner very dangerous. Residents have witnessed various road accidents at this junction.

Barnet Highways' reply dated 10.07.15

Your request for double yellow lines to be provided has been noted and Officers will include this request as part of the 2015/16 programme for the assessment and prioritisation of yellow lines which will take place later this year. Should it be considered necessary at this location, Officers will seek to progress this through the usual internal and statutory channels.

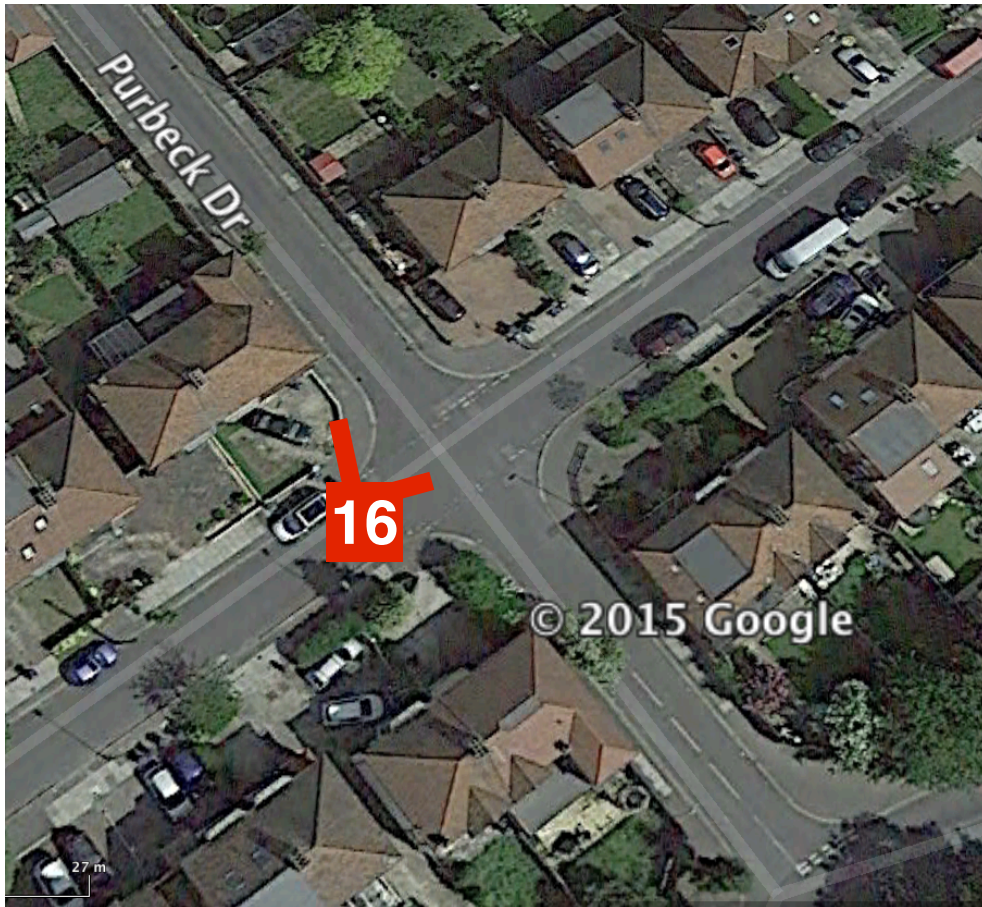


Cheviot Gardens and Malvern Gardens &
Cheviot Gardens and Cheviot Gate



Cheviot Gardens





Residents have also witnessed accidents at this junction.



Cumbrian Gardens and Purbeck Drive



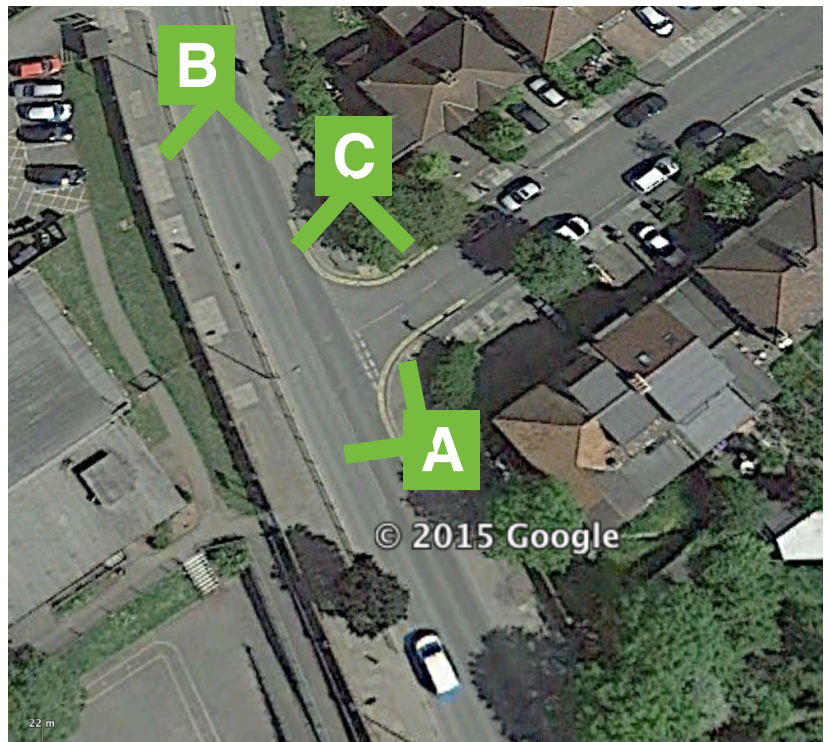
18 Quantock Gardens and Claremont Road

Although road markings are in good state and there are additional double yellow lines at the corners, visibility on this junction is particularly poor.

First because the hedges are overgrown and because cars park on the pavement on a regular basis - for school run or permanently - block visibility at the junction. This issue has already been raised at Claremont School.

This concerns many of our residents and was discussed at our last residents association meeting on 2.11.2015

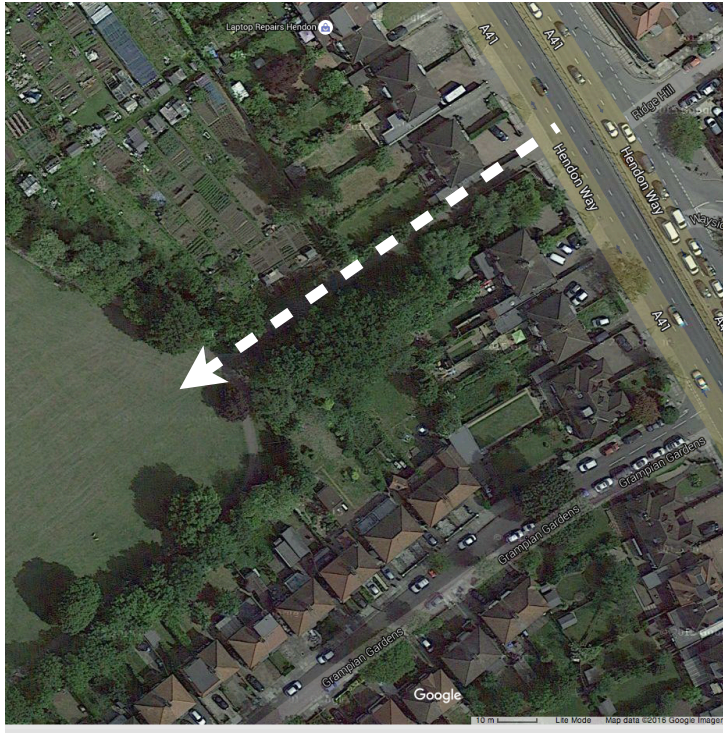
Another critical junction that needs all stakeholders' attention and joint efforts.



20

Clitterhouse Playing fields entrance from Hendon Way (A41)

Although vehicular access is not meant to take place, vehicles have been seen inside the Playing Fields. This has been discussed with our local Police team who agree that introducing a vehicular barrier for private vehicles might help to improve the safety of the area. Discussed at the Community and Police meeting on 28.10.2015



Other

General review of pavements needed

Another issue constantly raised by residents is the poor quality of the pavements and curb stones, due to wear and tear, cars parking on the pavement and tree roots.

Unfortunately some of our residents have fallen and injured themselves.

We are aware the Council has made punctual repairs, however a general review of pavements is urgently needed. Regular pavement sweeping would also contribute to pedestrians' safety.

Donoghue relocation

The residents of the Golders Green Estate would like to see Donoghue relocated as soon as possible, as its heavy traffic pose a constant safety threat to our residents and local schools children, from Claremont, Whitefield and Mapledown Schools. This in addition to the constant dust on our roads. This was discussed in our last residents association meeting on 2.11.2015.

Increase street lighting levels and tree pruning

GGERA has raised the issue of increasing street lighting levels with Mr Frier MP and Barnet Community Safety team. GGERA has also reported trees that are blocking light from street lights to be pruned, eg. reference 398256 dated 30.06.2015.